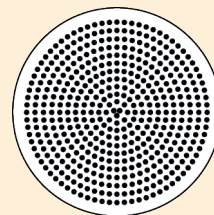
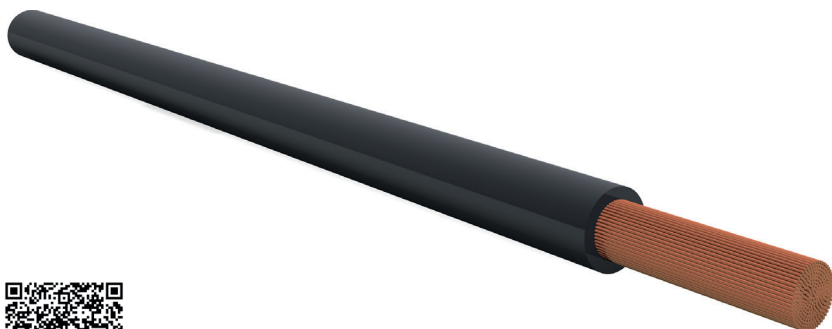


# H07-VK

## PVC - insulated flexible wires

RoHS

CROSS SECTION



Acc. to VDE 0285-525-2-31

## APPLICATION

Installation in dry rooms, switchgears and distribution boards, in pipes, on or within plastered surfaces and in sealed cable ducts. This PVC core cable can be installed for the following purposes: the internal wiring of appliances, switchgears and distribution boards, as well as for shielded installation in and on lights with a nominal voltage of up to 1000 V alternating current or up to 750 V direct current to earth. It is not suitable to be directly laid on platforms, channels or troughs.

## STRUCTURE

<b>Conductor</b>	Copper conductor, bare, flexible (class 5) according to DIN VDE 0295 and IEC 60228 cl. 5, HD 383
<b>Cores</b>	PVC insulation according to VDE 0281 part 1, colour coding according to VDE 0293

## TECHNICAL DATA

<b>Nominal voltage</b>	450 V/750 V
<b>Test voltage</b>	2500 V
<b>Insulation resistance</b>	20 MOhm x km
<b>Operating temperature</b>	On the conductor +70°C
<b>Min. installation temperature</b>	-5°C
<b>Max. installation temperature</b>	+70°C

Product description	Colour	Cu weight	Outer Ø (mm)	Weight (kg/km)	Product number	Colour code
H07 V-K 1.5	Black	14.4	3.1	20	1045150	-100
	Green/yellow	14.4	3.1	20	1045150	-101
	White	14.4	3.1	20	1045150	-102
	Red	14.4	3.1	20	1045150	-103
	Light blue RAL5015	14.4	3.1	20	1045150	-104
	Brown	14.4	3.1	20	1045150	-105
	Grey	14.4	3.1	20	1045150	-106
	Violet	14.4	3.1	20	1045150	-107
	Orange	14.4	3.1	20	1045150	-108
	Dark blue RAL5010	14.4	3.1	20	1045150	-109
	Yellow	14.4	3.1	20	1045150	-110
	Green	14.4	3.1	20	1045150	-111
	Ultramarine RAL5002	14.4	3.1	20	1045150	-112
	Light blue RAL5012	14.4	3.1	20	1045150	-113
	Flame red RAL3000	14.4	3.1	20	1045150	-118
	Squirrel grey RAL7000	14.4	3.1	20	1045150	-119
	Pink	14.4	3.1	20	1045150	-130

Product description	Colour	Cu weight	Outer Ø (mm)	Weight (kg/km)	Product number	Colour code
H07 V-K 2.5	Black	24.0	3.8	32	1045200	-100
	Green/yellow	24.0	3.8	32	1045200	-101
	White	24.0	3.8	32	1045200	-102
	Red	24.0	3.8	32	1045200	-103
	Light blue RAL5015	24.0	3.8	32	1045200	-104
	Brown	24.0	3.8	32	1045200	-105
	Grey	24.0	3.8	32	1045200	-106
	Violet	24.0	3.8	32	1045200	-107
	Orange	24.0	3.8	32	1045200	-108
	Dark blue RAL5010	24.0	3.8	32	1045200	-109
	Yellow	24.0	3.8	32	1045200	-110
	Green	24.0	3.8	32	1045200	-111
	Ultramarine RAL5002	24.0	3.8	32	1045200	-112
	Light blue RAL5012	24.0	3.8	32	1045200	-113
Flame red RAL3000	24.0	3.8	32	1045200	-118	
H07 V-K 4.0	Black	38.4	4.4	46	1045250	-100
	Green/yellow	38.4	4.4	46	1045250	-101
	White	38.4	4.4	46	1045250	-102
	Red	38.4	4.4	46	1045250	-103
	Light blue RAL5015	38.4	4.4	46	1045250	-104
	Brown	38.4	4.4	46	1045250	-105
	Grey	38.4	4.4	46	1045250	-106
	Orange	38.4	4.4	46	1045250	-108
	Dark blue RAL5010	38.4	4.4	46	1045250	-109
	Yellow	38.4	4.4	46	1045250	-110
	Flame red RAL3000	38.4	4.4	46	1045250	-118
H07 V-K 6.0	Black	58.0	5.0	65	1045300	-100
	Green/yellow	58.0	5.0	65	1045300	-101
	White	58.0	5.0	65	1045300	-102
	Red	58.0	5.0	65	1045300	-103
	Light blue RAL5015	58.0	5.0	65	1045300	-104
	Brown	58.0	5.0	65	1045300	-105
	Grey	58.0	5.0	65	1045300	-108
	Dark blue RAL5010	58.0	5.0	65	1045300	-109
	Yellow	58.0	5.0	65	1045300	-110
	Flame red RAL3000	58.0	5.0	65	1045300	-118
H07 V-K 10.0	Black	96.0	6.4	113	1045350	-100
	Green/yellow	96.0	6.4	113	1045350	-101
	White	96.0	6.4	113	1045350	-102
	Red	96.0	6.4	113	1045350	-103
	Light blue RAL5015	96.0	6.4	113	1045350	-104
	Brown	96.0	6.4	113	1045350	-105
	Grey	96.0	6.4	113	1045350	-108
	Dark blue RAL5010	96.0	6.4	113	1045350	-109
	Yellow	96.0	6.4	113	1045350	-110
	Flame red RAL3000	96.0	6.4	113	1045350	-118
H07 V-K 16.0	Black	154.0	7.2	170	1045400	-100
	Green/yellow	154.0	7.2	170	1045400	-101
	White	154.0	7.2	170	1045400	-102
	Red	154.0	7.2	170	1045400	-103
	Light blue RAL5015	154.0	7.2	170	1045400	-104
	Brown	154.0	7.2	170	1045400	-105
	Grey	154.0	7.2	170	1045400	-108
	Dark blue RAL5010	154.0	7.2	170	1045400	-109
	Yellow	154.0	7.2	170	1045400	-110
	Flame red RAL3000	154.0	7.2	170	1045400	-118
H07 V-K 25.0	Black	240.0	8.9	260	1045451	-100
	Green/yellow	240.0	8.9	260	1045451	-101
	Light blue RAL5015	240.0	8.9	260	1045451	-104
H07 V-K 35.0	Black	336.0	10.1	360	1045506	-100
	Green/yellow	336.0	10.1	360	1045506	-101
	Light blue RAL5015	336.0	10.1	360	1045506	-104
H07 V-K 50.0	Black	480.0	11.8	515	1045556	-100
	Green/yellow	480.0	11.8	515	1045556	-101

Product description	Colour	Cu weight	Outer Ø (mm)	Weight (kg/km)	Product number	Colour code
H07 V-K 70.0	Black	672.0	13.6	710	1045600	-100
	Green/yellow	672.0	13.6	710	1045600	-101
H07 V-K 95.0	Black	912.0	15.7	940	1045650	-100
	Green/yellow	912.0	15.7	940	1045650	-101
H07 V-K 120.0	Black	1152.0	17.3	1180	1045700	-100
	Green/yellow	1152.0	17.3	1180	1045700	-101
H07 V-K 150.0	Black	1440.0	19.8	1400	1045750	-100
	Green/yellow	1440.0	19.8	1400	1045750	-101
H07 V-K 185.0	Black	1776.0	21.6	1700	1045800	-100
	Green/yellow	1776.0	21.6	1700	1045800	-101
H07 V-K 240.0	Black	2304.0	24.6	2230	1045850	-100
	Green/yellow	2304.0	24.6	2230	1045850	-101