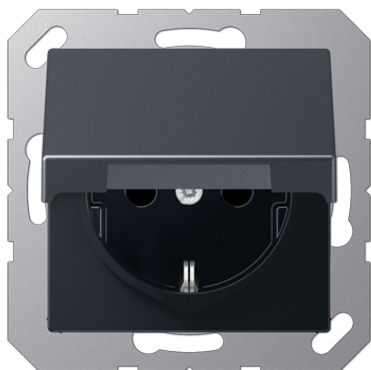


Product data sheet

SCHUKO® socket with hinged lid



Reference number

A 1520 BFKL ANM

SCHUKO® socket 16 A / 250 V ~

with hinged lid (with spring)
screwless terminals for wires up to 2.5 mm²

without claws: ref.-no. with additional "N", e.g.: ..1520 N..

With screw terminals: ref.-no. ..1521..

Supporting frame, claws and claw screws are integrated into the earth protection.

matt lacquered

Colour:
matt anthracite

Material:
thermoplastic lacquered

IP Protection level IP 44 is ensured with sealing gasket ref.-no. 551 WU and "IP 44 frame" of the respective design range.