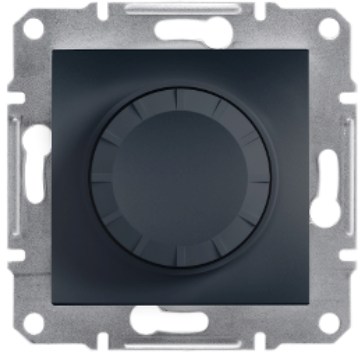


Product data sheet

Specifications



Asfora - Rotary Dimmer/315RC/2-way (MTN5136-0000), wo frame, anthracite

EPH6600171

Main

Range	Asfora
Product or component type	Dimmer
Device presentation	Mechanism with fixing frame
Load type	230 V AC halogen lamp: 20...315 W 230 V AC incandescent lamp: 20...315 W Low voltage halogen lamp with electronic transformer: 20...315 W
Colour tint	Anthracite
Type of packing	Box

Complementary

Device mounting	Flush
Switch function	1-pole 2-way
Dimmer control	Rotary push type
Dimmer application	Capacitive load Ohmic load
Protection type	Short-circuit and overload protection with automatic reset
[Ue] rated operational voltage	230 V AC 50 Hz
Connections - terminals	Pillar terminals
Number of cables	2 cable(s) 2.5 mm ²
Cable stiffness	Rigid Flexible
Wire stripping length	8 mm
Material	ABS (acrylonitrile butadiene-styrene): central plate ABS (acrylonitrile butadiene-styrene): knob
Surface finish	Painted
Conductor material	Copper
Fixing mode	Claws53...78 mm
Height	71 mm
Width	71 mm
Depth	50 mm
Projecting depth	21 mm
Net weight	0.099 kg

Environment

Product certifications	UKR TSE VDE FIMKO NEMKO SEMKO GOST
Quality labels	CE
IP degree of protection	IP20

Packing Units

Unit Type of Package 1	PCE
Number of Units in Package 1	1
Package 1 Height	6.0 cm
Package 1 Width	8.5 cm
Package 1 Length	8.5 cm
Package 1 Weight	142.0 g
Unit Type of Package 2	S02
Number of Units in Package 2	24
Package 2 Height	15.0 cm
Package 2 Width	30.0 cm
Package 2 Length	40.0 cm
Package 2 Weight	3.647 kg

Offer Sustainability

REACH Regulation	REACH Declaration
EU RoHS Directive	Compliant EU RoHS Declaration
Mercury free	Yes
China RoHS Regulation	China RoHS declaration Product out of China RoHS scope. Substance declaration for your information
RoHS exemption information	Yes
WEEE	The product must be disposed on European Union markets following specific waste collection and never end up in rubbish bins

Recommended replacement(s)