

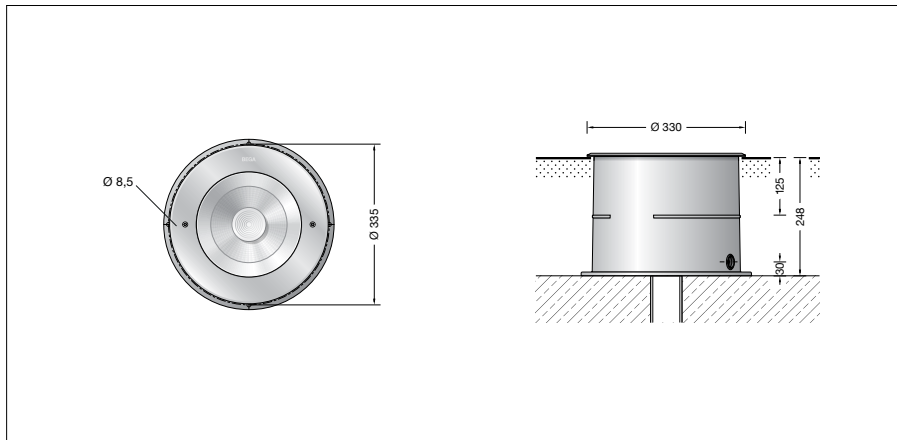
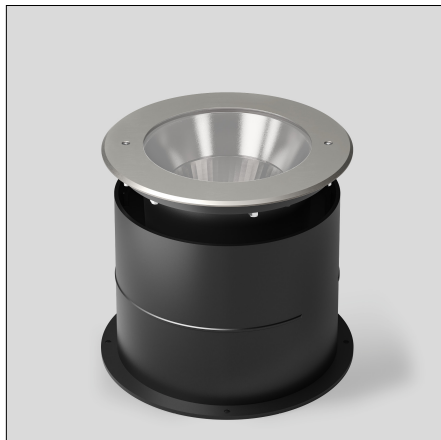
BEGA**84 297**

In-ground luminaire



Project · Reference number

Date



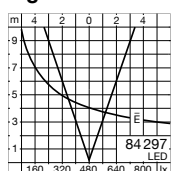
Product data sheet

Product description

Luminaires and installation housings made of highly corrosion-resistant aluminium
 BEGA Tricoat® coating technology
 Cover ring made of stainless steel
 Steel grade no. 1.4301
 Ring made of glass fibre reinforced synthetic material
 Clear safety glass
 Reflector surface made of pure aluminium
 Optical silicone lens · BEGA Hybrid Optics®
 Recess housing with cable entry for cable conduit, max \varnothing 20 mm
 1,8 m water-resistant connecting cable
 07RN8-F 5G1[□] with implemented water stopper and 1.2 m PVC cable conduit
 BEGA Ultimate Driver®
 LED power supply unit
 220-240 V \sim 0/50-60 Hz
 DC 176-264 V
 DALI controllable
 A basic isolation exists between power cable and control line
 BEGA Thermal Control®
 Temporary thermal regulation to protect temperature-sensitive components without switching off the luminaire
 Safety class I
 Protection class IP 68 10 m
 Dust-tight and water pressure tight
 Maximum submersion depth 10 m
 Pressure load 5,000 kg (~50 kN)
 Impact strength IK10
 Protection against mechanical impacts < 20 joule
 CE – Conformity mark
 – Safety mark
 Weight: 13.7 kg

Inrush current

Inrush current: 5 A / 100 μ s
 Maximum number of luminaires of this type per miniature circuit breaker:
 B10A: 18 luminaires
 B16A: 28 luminaires
 C10A: 18 luminaires
 C16A: 28 luminaires

Light distribution**Application**

Floodlight with symmetrical light distribution.
 For recessed mounting in compacted surfaces, paths and places.
 Drive-over luminaire for vehicles with pneumatic tyres.

Please note:

Luminaire must not be used for installation in road lanes, where the fixture is exposed to a horizontal strain due to braking, acceleration and change of direction.
 For walk-through public areas, we recommend skid-blocking glass
 – see accessories.

Lamp

Module connected wattage	46.7 W
Luminaire connected wattage	50.8 W
Rated temperature	$t_a = 25^\circ\text{C}$
Ambient temperature	$t_{a\text{max}} = 40^\circ\text{C}$

84 297 K3

Module designation	LED-0785/830
Colour temperature	3000 K
Colour rendering index	CRI > 80
Module luminous flux	7600 lm
Luminaire luminous flux	5160 lm
Luminaire luminous efficiency	101,6 lm/W

84 297 K4

Module designation	LED-0785/840
Colour temperature	4000 K
Colour rendering index	CRI > 80
Module luminous flux	7795 lm
Luminaire luminous flux	5292 lm
Luminaire luminous efficiency	104,2 lm/W

Lighting technology

Half beam angle 35°
 Luminaire data for the light planning program DIALux for outdoor lighting, street lighting and interior lighting as well as luminaire data in EULUMDAT and IES format are available on our website www.bega.com.

BEGA Hybrid Optics®

BEGA Hybrid Optics® offers complete lighting control thanks to optimum refraction and reflection. Precisely calculated reflectors with a surface made of pure aluminium and lenses made of ultra-clear silicone or glass capture nearly every beam of light from the LED modules. The interplay between lens and reflector technologies achieves maximum application efficiency.

BEGA Tricoat®

BEGA Tricoat® is a protected trademark for a technology that we use in order to achieve optimal corrosion resistance. These carefully coordinated inorganic and organic coating processes applied to extremely resistant alloys ensure the best possible surface protection and outstanding corrosion resistance.

Service life · Ambient temperature

Rated temperature $t_a = 25^\circ\text{C}$	
LED psu:	> 50,000 h
LED module:	95,000 h (L80B50) 100,000 h (L70B50)

Ambient temperature max. $t_a = 40^\circ\text{C}$ (100 %)	
LED psu:	50,000 h
LED module:	55,000 h (L80B50) 100,000 h (L70B50)

Ambient temperature max. $t_a = 50^\circ\text{C}$ (92 %)	
LED psu:	50,000 h
LED module:	> 50,000 h (L70B50)

BEGA Thermal Control® protects temperature-sensitive luminaire components by temporarily limiting the nominal power at high temperatures.

Article No. 84 297

LED colour temperature optionally 4000 K or 3000 K
 4000 K – Article number + **K4**
 3000 K – Article number + **K3**

We supply this luminaire with skid-blocking glass which is denoted by **R** after the article number.

Accessories

14001415R Skid-blocking glass in accordance with EN ISO 51130 R13
 Surface abrasion in accordance with EN ISO 10545-7: Category II
 Anti-slip protection in accordance with DIN 51097 Class C

Distribution box for installation in soil
70 730 Distribution box with 7 cable entries
 Connection terminals $5 \times 4^{\square}$

71 053 Distribution box with 10 cable entries
 Connection terminals $6 \times 16^{\square}$

A separate instructions for use can be provided upon request.