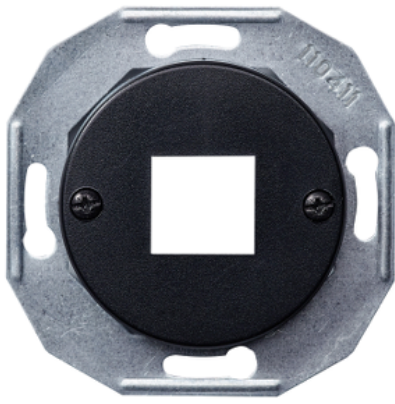


Product data sheet

Specifications



Renova - central plate - black

WDE011702

Main

Range	Renova
Product or component type	Central plate
Device presentation	Mechanism with fixing frame

Complementary

Device mounting	Flush
Socket number	1
Colour tint	Black
Material	Thermoplastic
Diameter	83 mm
Embedding depth	20 mm

Environment

IP degree of protection	IP20
-------------------------	------

Packing Units

Unit Type of Package 1	PCE
Number of Units in Package 1	1
Package 1 Weight	25 g
Package 1 Height	2 cm
Package 1 width	7 cm
Package 1 Length	7 cm
Unit Type of Package 2	BAG
Number of Units in Package 2	1
Package 2 Weight	30 g
Package 2 Height	2 cm
Package 2 width	12 cm
Package 2 Length	14 cm

Offer Sustainability

EU RoHS Directive	Compliant EU RoHS Declaration
Toxic heavy metal free	Yes
Mercury free	Yes
RoHS exemption information	Yes
China RoHS Regulation	China RoHS declaration Pro-active China RoHS declaration (out of China RoHS legal scope)
Environmental Disclosure	Product Environmental Profile
WEEE	The product must be disposed on European Union markets following specific waste collection and never end up in rubbish bins
